

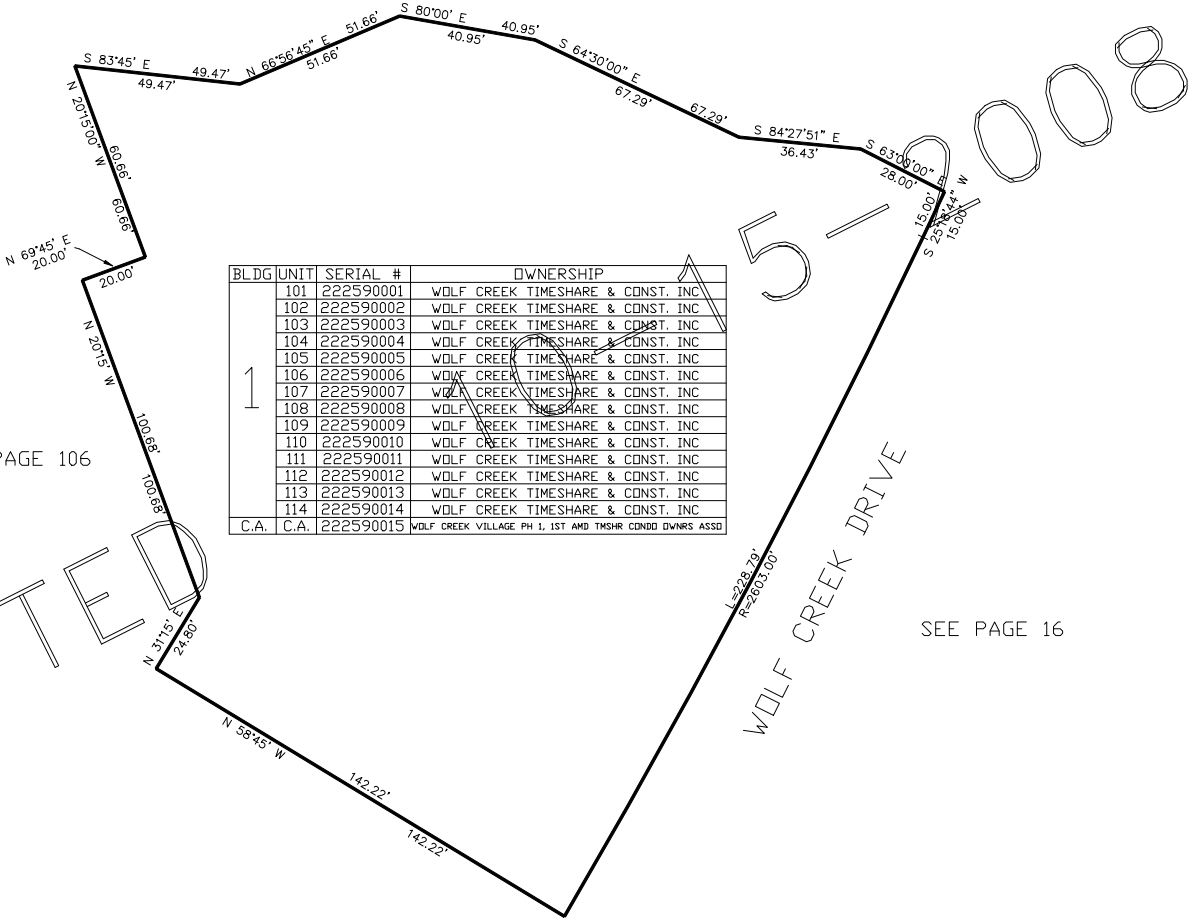
PART OF THE S.1/2, OF SECTION 22, T.7N., R.1E., S.L.B. & M.
WOLF CREEK VILLAGE PHASE 1, 1ST AMENDMENT

IN WEBER COUNTY

TAXING UNIT: 203

SCALE 1" = 30'

SEE PAGE 162



SEE PAGE 106

SEE PAGE 16

BLDG	UNIT	SERIAL #	OWNERSHIP
	1	222590001	WOLF CREEK TIMESHARE & CDNST. INC
		222590002	WOLF CREEK TIMESHARE & CDNST. INC
		222590003	WOLF CREEK TIMESHARE & CDNST. INC
		222590004	WOLF CREEK TIMESHARE & CDNST. INC
		222590005	WOLF CREEK TIMESHARE & CDNST. INC
		222590006	WOLF CREEK TIMESHARE & CDNST. INC
		222590007	WOLF CREEK TIMESHARE & CDNST. INC
		222590008	WOLF CREEK TIMESHARE & CDNST. INC
		222590009	WOLF CREEK TIMESHARE & CDNST. INC
		222590010	WOLF CREEK TIMESHARE & CDNST. INC
		222590011	WOLF CREEK TIMESHARE & CDNST. INC
		222590012	WOLF CREEK TIMESHARE & CDNST. INC
		222590013	WOLF CREEK TIMESHARE & CDNST. INC
		222590014	WOLF CREEK TIMESHARE & CDNST. INC
C.A.	C.A.	222590015	WOLF CREEK VILLAGE PH 1, 1ST AM TMSHR CONDO OWNRS ASSO

FOR COMPLETE ENG DATA SEE
ORIGINAL DEDICATION PLAT IN
BOOK 64, PAGE 2&3 OF RECORDS.